

# Prisma Light



Elia

2-16

AID

 PRISMATIBRO

# MANUAL

## INSTALLATION

# PRODUCT DESCRIPTION

Prisma Light





## PRODUCT DESCRIPTION

Prisma Light Ella AID is a programmable bollard equipped with white light directed at the pedestrian crossing and flashing yellow warning lights facing incoming traffic. The warning light is activated via a push button on the lid or touchlessly in front of the bevels on the lid. Wirelessly activates other bollards in the same group.

## APPLICATION AREAS

Unmonitored pedestrian crossings.  
For indoor and outdoor use.

## WEIGHT

Complete for installation in foundation: 8.4 kg  
Complete for ground mount installation: 7.1 kg

## DIMENSIONS

Height: 930 mm  
Width: Ø 250 mm

## CONFIGURATION

Delivered with a customer-specific configuration adjustable via the Android app Prisma Light AID through Bluetooth. Contact PrismaTibro for information and access to the app.

## STANDARD CONFIGURATION

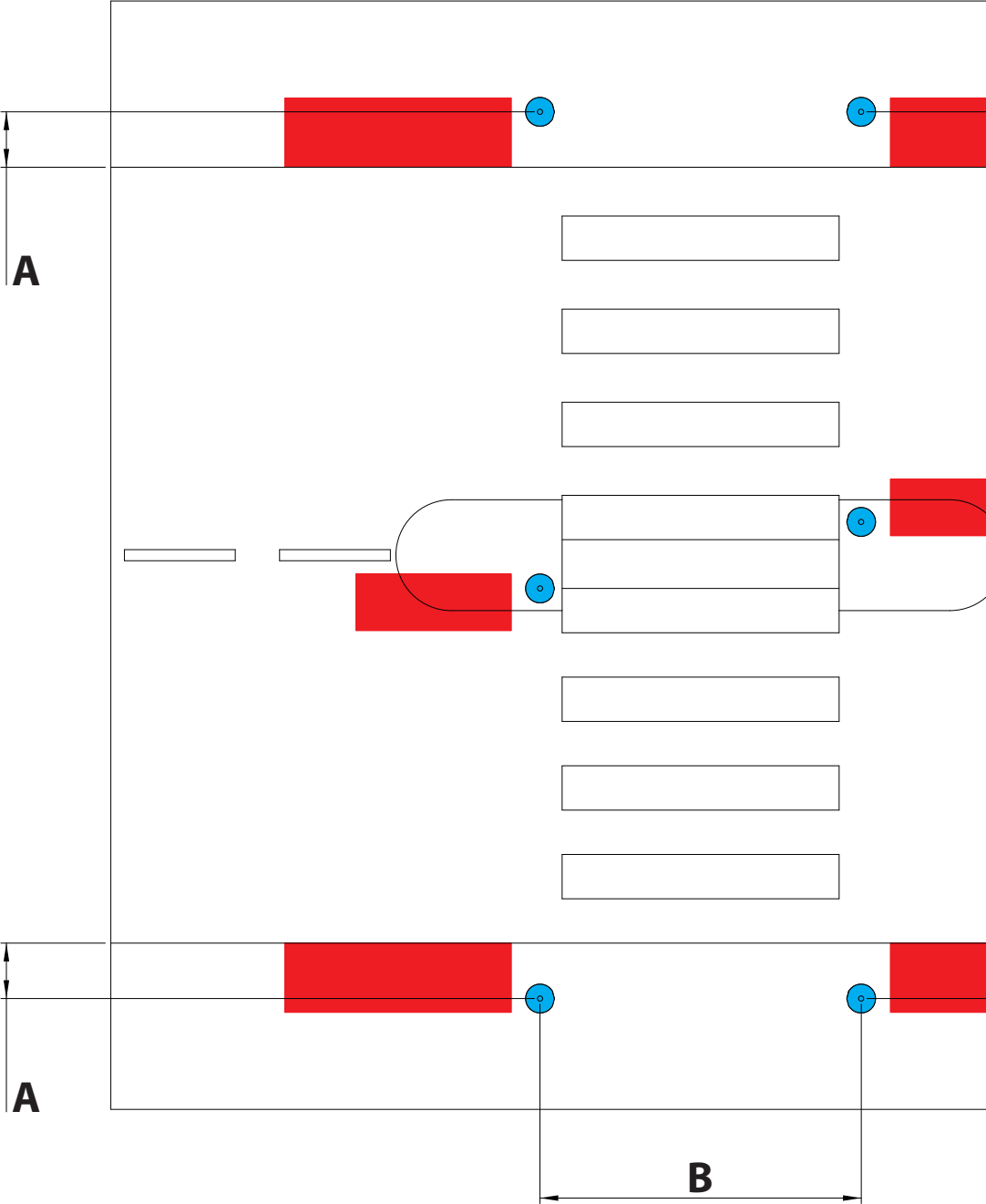
When no specific customer requirements are stated:

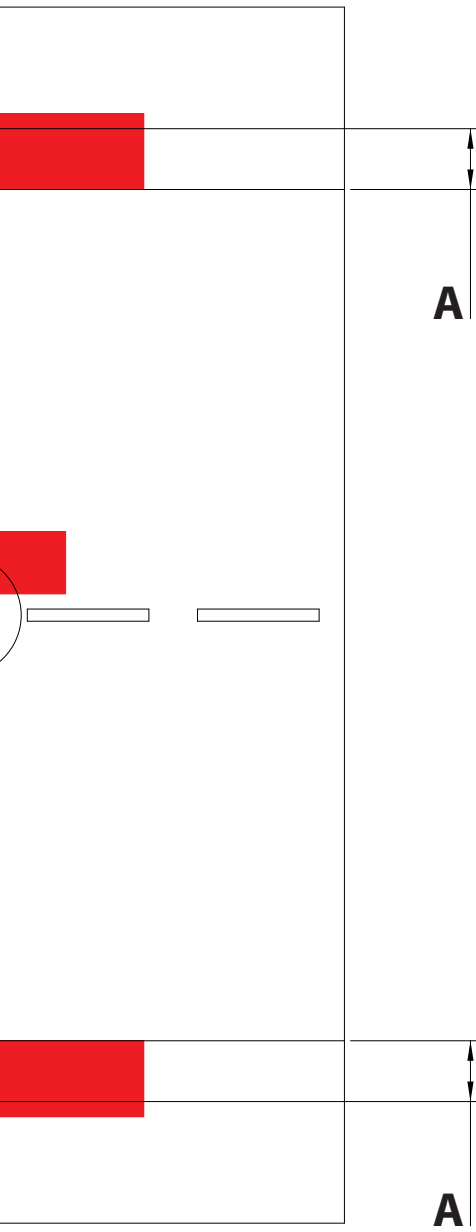
**Yellow light brightness** inactive/active 0/100%

**White light brightness** inactive/active: 70/100%

**Passage time** 15 seconds

# INSTALLATION MECHANICAL





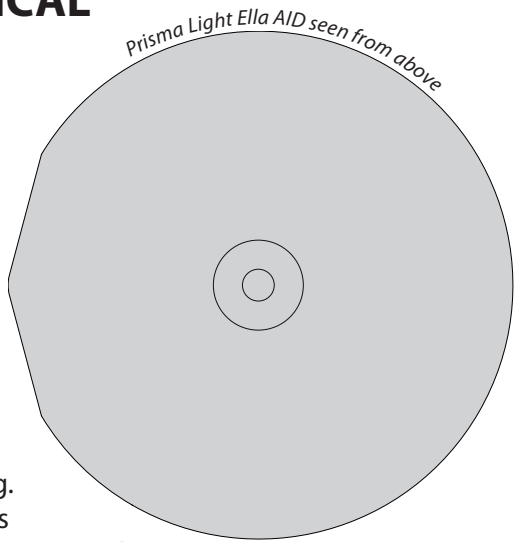
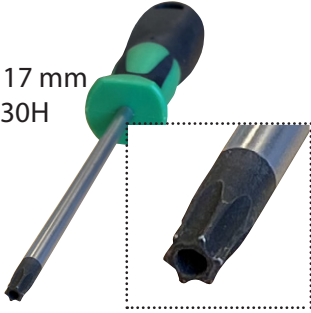
## CONSIDERATIONS BEFORE INSTALLATION

1. It is recommended that Prisma Light Ella AID is being installed at least 50 cm from the road edge (A).
2. The distance between two Prisma Light Ella AID units should not exceed 5 meters when using auto-notification (B).
3. There should be no objects in the red-marked zones that could obstruct the warning light from reaching incoming vehicles.

# INSTALLATION MECHANICAL

## Tools

Socket wrench 17 mm  
Security Torx T-30H



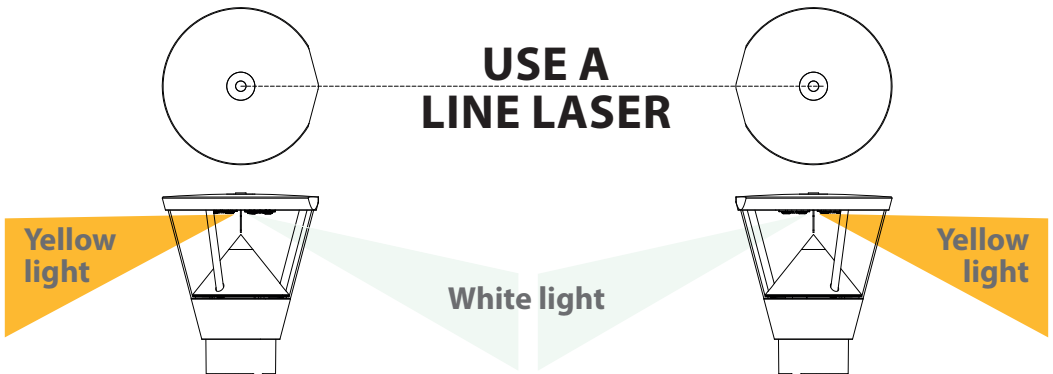
## Installation

**Note the bevels on the lid.**

Prisma Light Ella AID should be rotated so that the bevels face the pedestrian crossing. This ensures that the white light illuminates the crossing and the yellow light faces incoming traffic.

## Note!

To optimize the detection zones when using auto-notification, use a line laser to align the units with each other.



## Specifications

Input Voltage

100-240 V AC, 50/60Hz

Power Consumption

23 W

Insulation Class

Double insulated, CLASS II on the luminaire  
The luminaire is connected to the wiring inside the pole.



## Foundation Mounting

1. Unscrew the pole hatch.
2. Insert the pole tube into the foundation, secure it with the locking wedge, and press the rubber collar to ground level.
3. Connect the ground cables (230V) to the fuse.
4. Adjust the alignment of the lamp housing and then fasten the central axis (C) using a 17 mm socket wrench with approximately 10 Nm torque.
5. Connect the lamp head's connector to the fuse holder's connector (D).
6. Screw the pole hatch back in place.

## Ground Mounting

1. Unscrew the pole hatch.
2. Attach the pole tube to the ground and press the rubber collar to ground level.
3. Connect the ground cables (230V) to the fuse.
4. Adjust the alignment of the lamp housing and then fasten the central axis (C) using a 17 mm socket wrench with approximately 10 Nm torque.
5. Connect the lamp head's connector to the fuse holder's connector (D).
6. Screw the pole hatch back in place.

## Time for Configuration!

Refer to the manual and instructional video.



**\*PrismaTibro does NOT provide foundations and accessories.**

## SERVICE & MAINTENANCE

The light source in the luminaire should only be replaced by qualified personnel. The circuit board with diodes is not accessible without disassembling the entire luminaire. Opening the optical part risks compromising the IP rating. If there are issues, the luminaire should be returned in its entirety for repair or replacement by PrismaTibro. Prisma Light Ella AID can be rinsed with water under low pressure but not with a high-pressure washer.



## WARRANTY

In case of any issues, the luminaire should be returned in its entirety for repair or replacement by PrismaTibro.

For full warranty terms and conditions please visit the website [www.prismatibro.se](http://www.prismatibro.se) or call +4650440040 or send an email to [support@prismatibro.se](mailto:support@prismatibro.se).

## TROUBLESHOOTING

[Scan or click](#) the QR code for direct access.



## RECYCLING & PACKAGING MATERIALS

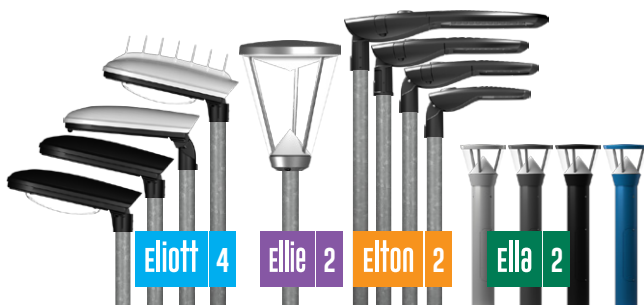


Packaging materials are reusable and/or recyclable. PrismaTibro AB is affiliated with El-Kretsen for recycling in Sweden.

## DOWNLOADABLE DOCUMENTS



[Scan or click](#) the QR code for direct access.



3303-EN - 260327-01



ADDRESS Järnvägsgatan 19, SE-543 50 Tibro  
SWITCHBOARD +46 504 400 40  
WEB [prismatibro.se](http://prismatibro.se)  
E-MAIL [contact@prismatibro.se](mailto:contact@prismatibro.se)