

Prisma Daps

DIRECTION ARROWS 4K

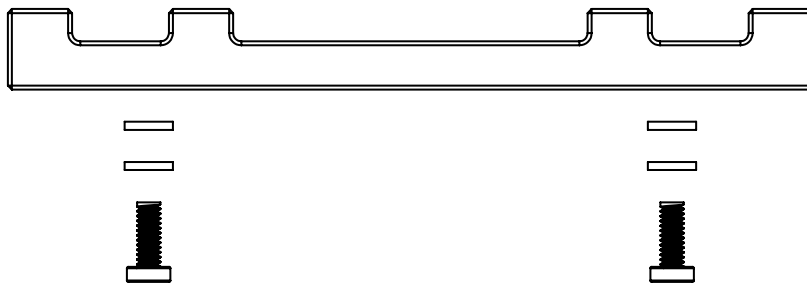
Rubber seal to be placed on the toplid



Lock washer to be placed under the lid

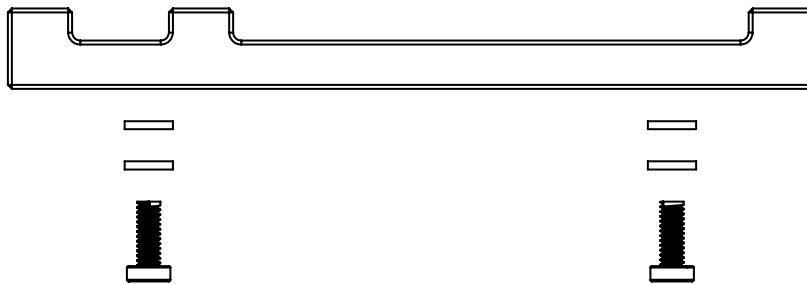
825-5131

K K - K K



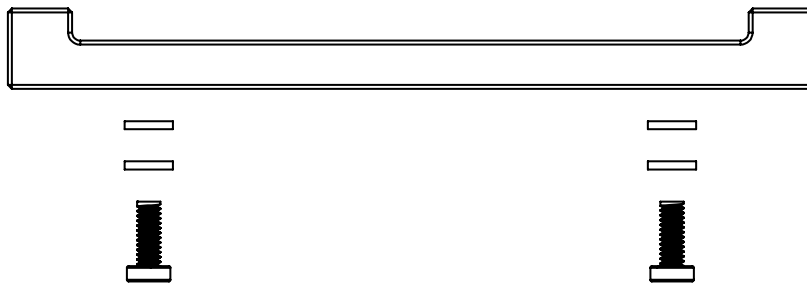
825-5132

K K - - K



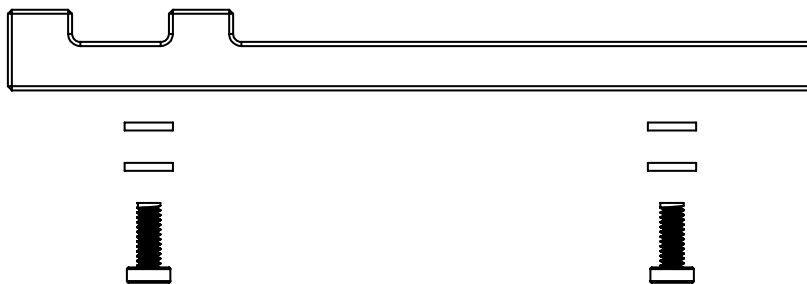
825-5133

K - - - K



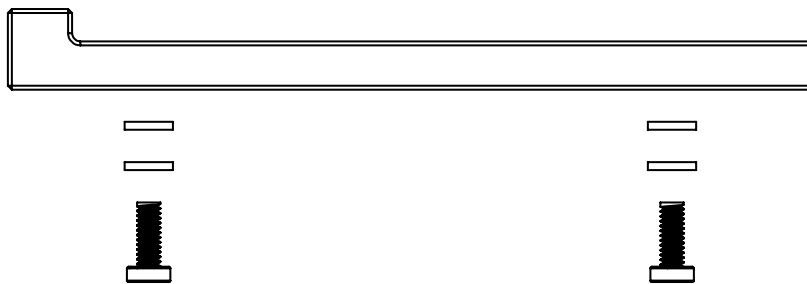
825-5134

K K - - -



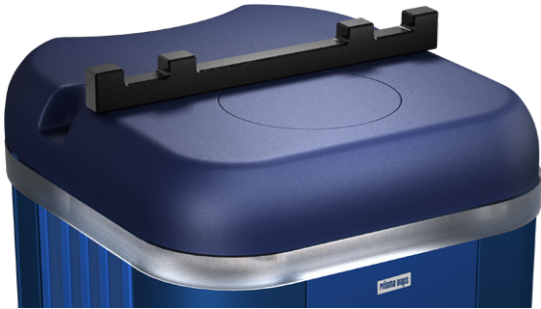
825-5135

K - - - -



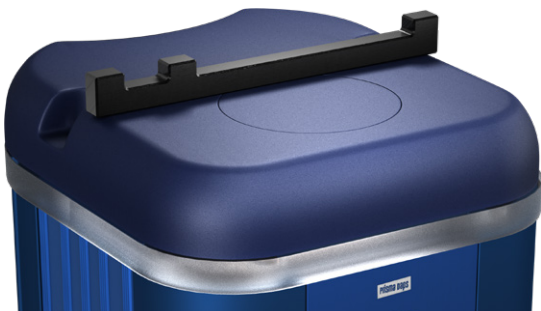
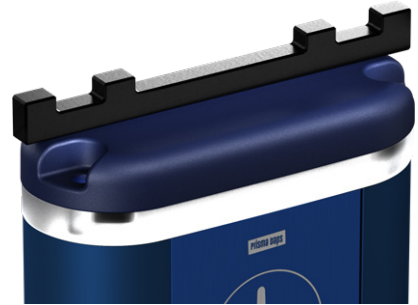
Prisma Daps

DIRECTION ARROWS 4K



825-5131

K K - K K



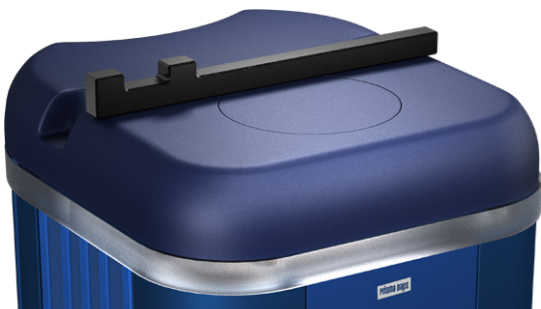
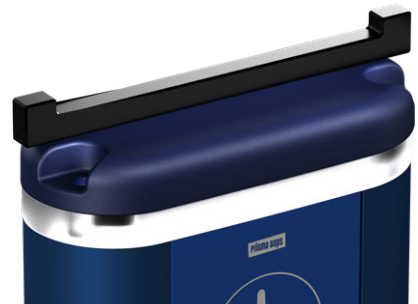
825-5132

K K - - K



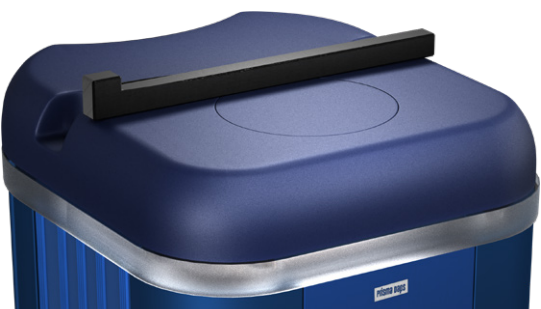
825-5133

K - - - K



825-5134

K K - - -



825-5135

K - - - -

