

Prisma Button



MANUAL INSTALLATION

300

ELBOW SWITCH
ACTIVATION PANEL

 PRISMATIBRO

 PRISMATIBRO

MOUNTING AND INSTALLATION

- Remove the top lid **A** and bottom lid **I** in accordance with image on the next page, and pull out the push front **F** from the outer profile **E**
- Set the dip-switches as desired, as described on the last page
- Adjust the length of the wire from the wall box to the connection terminal with a good margin
- Thread the cabling through the cable outlet **D** on the outer profile **E**
- Install the cabling according to diagram **J**
- Slide the push front **F** down the outer profile **E** so it is edge to edge.
- Mount outer profile **E** with screws at screw holes **B** and **H**
- Drill a drainage hole in the marked depression in the bottom cover
- Mount the top lid **A** and bottom lid **I** so it “clicks”
- Turn on, wait a few seconds until the unit starts.
- **NOTE** See further information about the lids on the next page



Watch the instruction film
Short of space when mounting?
Scann QR-code with
smartphone or tablet.

TECHNICAL SPECS	
Dimensions	286 x 95 x 25 mm
Weight	0,5 kg
Power supply	18-30 VDC
Connection cable	2 wires for power supply. 2 wires for signaling door automatics. To be able to use all functions in both relays two more wires are required. Total of six wires.
Power consumption	Standby ≈ 30 mA Activated ≈ Max 47 mA
Relays, 2 pcs	Relay 1: one alternating connection Relay 2: one alternating, one closed connection
Relay, max rated current	Maximum per pole 2A
Material Outer profile and Push front	Aluminum
Material Lids	Polyamide

LID

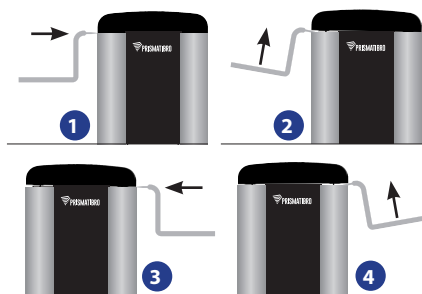
Two combinations

The choice is made during purchase order with end customers decision.

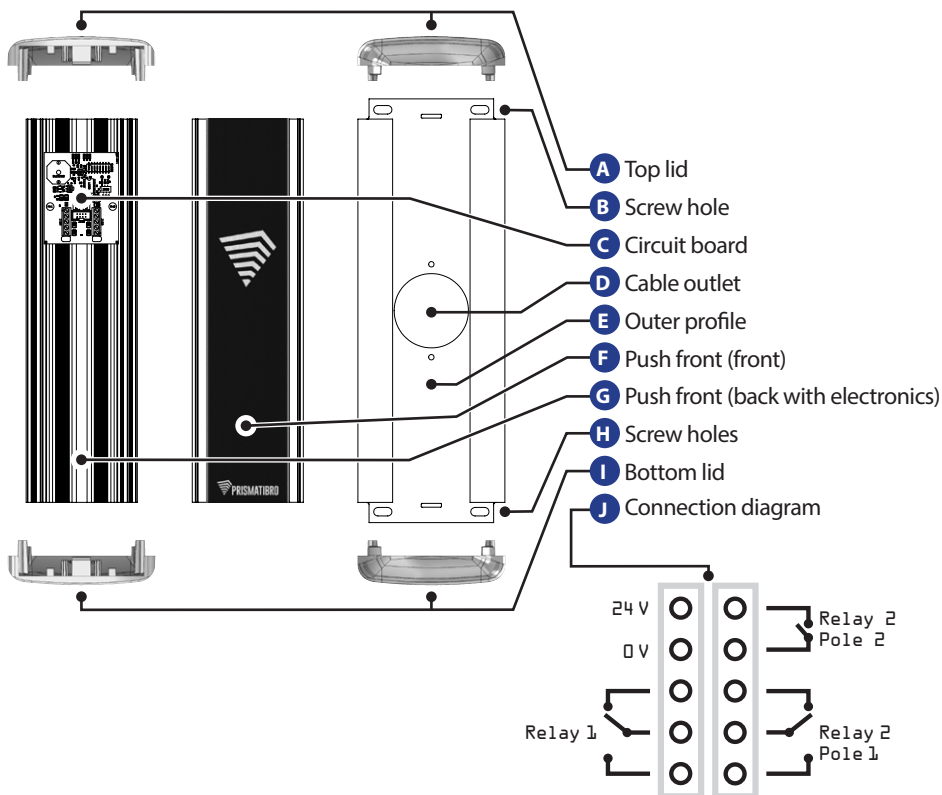
1. Top lid and bottom lid with screws.
2. Top lid without screws, bottom lid with screws.



Dismantling lid without screws



EXPLOADED VIEW

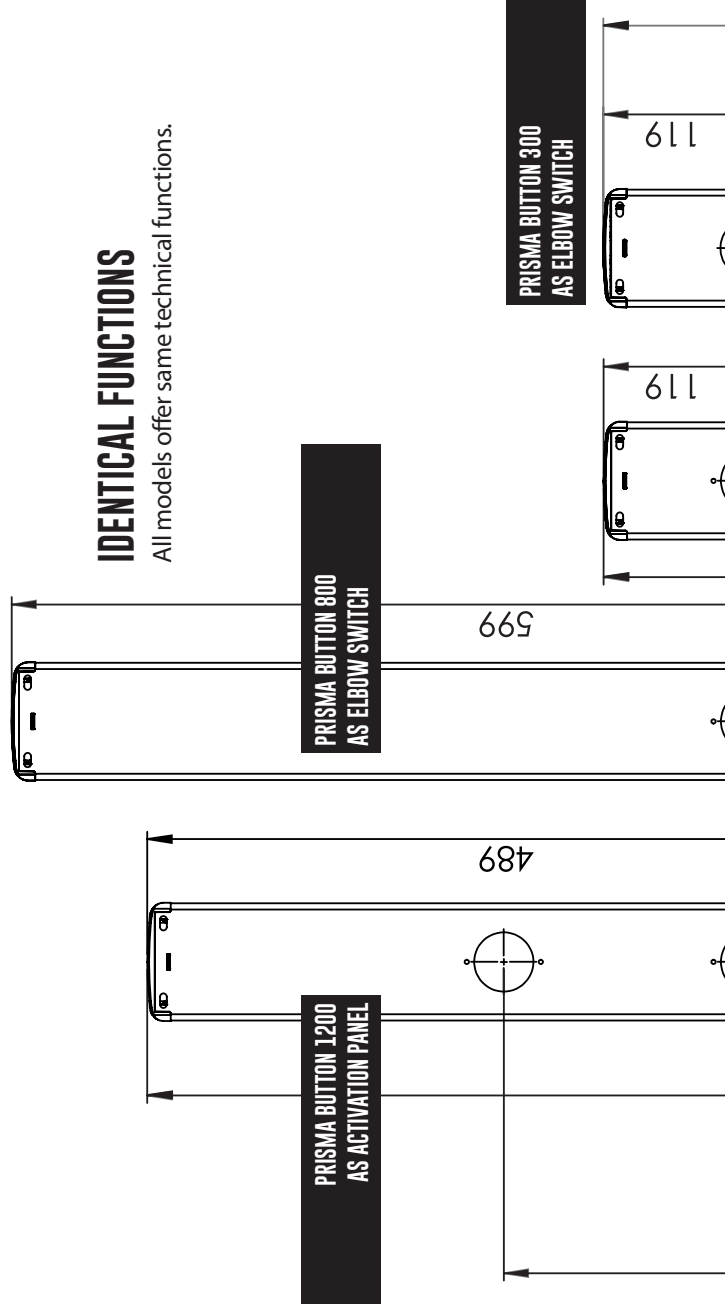


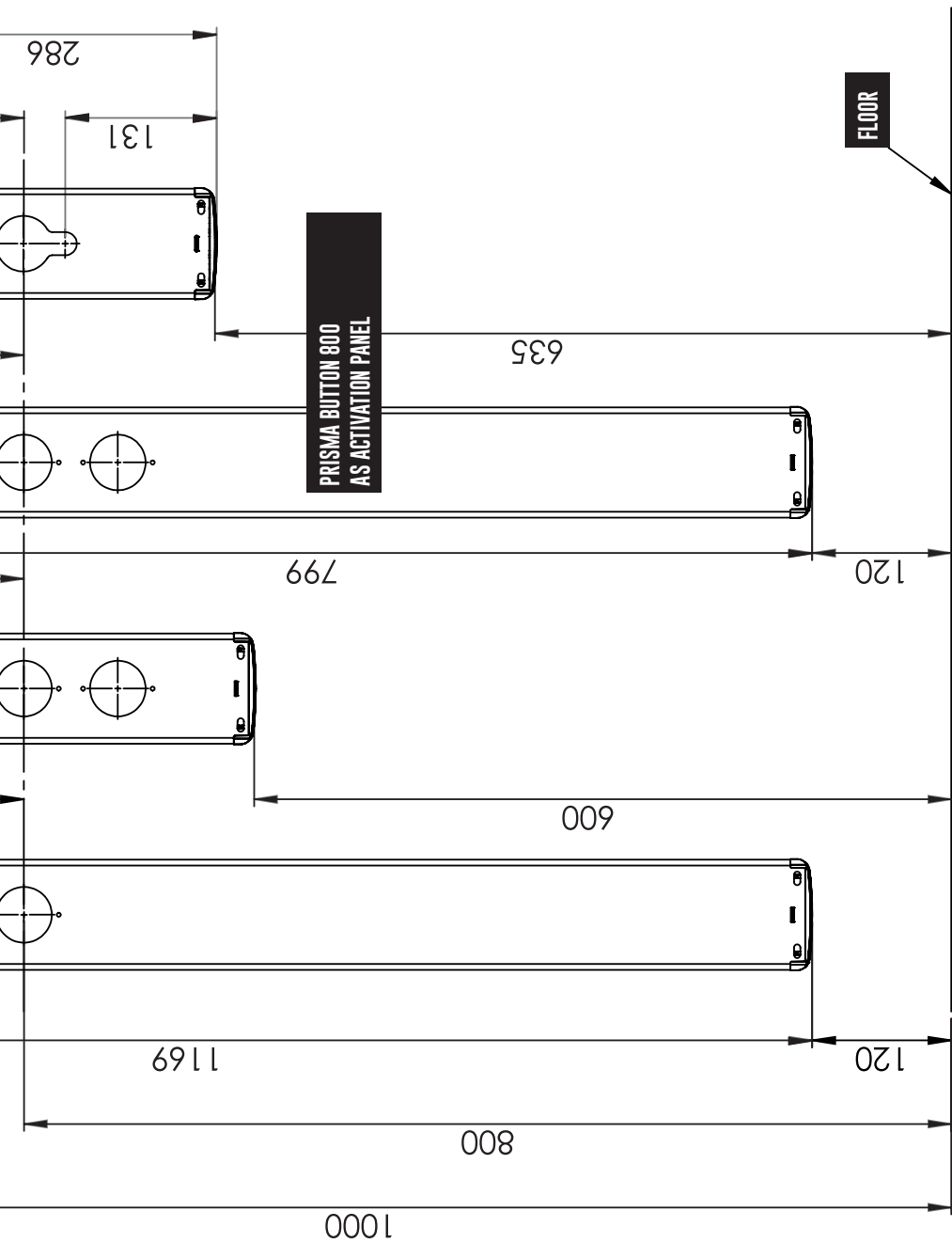
Prisma Button

ALTERNATIVE MOUNTING

IDENTICAL FUNCTIONS

All models offer same technical functions.



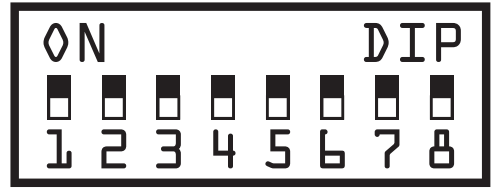


DIP-SWITCH

When delivered

All 8 dip switches are set in OFF mode which means:
Push activates
relay 1 = "locking mechanism"
after 0,2 sec activates
relay 2 = door opening

ON
↑
↓
OFF



NOTE Dip-switch "Extended push" and "Nurse Bed" cannot be activated at the same time.

EXTENDED PUSH

Press and hold the push front for 1.5 seconds to activate.

Dip-switch 1: ON

NOTE If dip-switch 8 is set ON this function will be deactivated

Press and hold the push front for 3 seconds to activate.

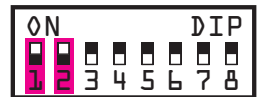
Dip-switch 2: ON

NOTE If dip-switch 8 is set ON this function will be deactivated

Press and hold the push front for 6 seconds to activate.

Dip-switch 1 and 2: ON

NOTE If dip-switch 8 is set ON this function will be deactivated.



KICK FUNCTION

Excessive violence protection will be deactivated and
Prisma Button will accept stronger push/kick.



Dip-switch 3: ON

LIMITED RELAY CONNECTING TIME

You can choose the option of a relay connecting time for
max 1 second.

It will only receive one signal no matter the pressure time on
the push front.



Dip-switch 4: ON

NOTIFICATION SOUND

When you press the push front there is a notification sound.



Dip-switch 5: ON

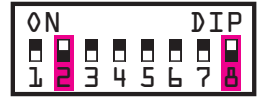
LOCK OPENING, DELAYED DOOR OPENING

Can be used to control the locking mechanisms when the signal to the door opening needs to be delayed by 1,5 seconds. The function can also be used if you want unsynchronized opening of double doors.

Short press: activates relay 1, "locking mechanism".

Press 1,5 seconds: activate relay 1, "locking mechanism" directly.

When pressed for 1,5 seconds, relay 2, "door" is also activated.



Dip-switches 2 and 8: ON

ACTIVATE RELAY 1

Deactivate relay 2



Dip-switch 6: ON

ACTIVATE RELAY 2

Deactivate relay 1



Dip-switch 7: ON

NURSE BED FUNCTION 1

Control the pair doors in different ways, depending the pressure on the push front.

Direct push: activate relay 1, "Door 1"

Extended push 1.5 seconds activate relay 2, "Door 2".



Dip-switch 8: ON

NURSE BED FUNCTION 2

Control pair doors in different ways depending the pressure on the push front.

Direct push: activate relay, 1 "Door 1"

Extended push 1.5 seconds activate relay 1+2, "Door 1" and "Door 2".

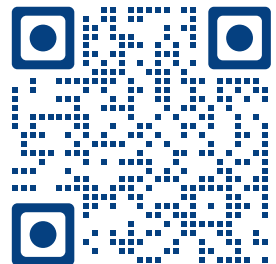


Dip-switch 1 and 8: ON



LIVE-DEMO

Best user experience on a computer - the screen on a smartphone is small...



prisma Button



1200

800

300

ACCESSIBILITY FOR EVERYBODY



ADDRESS Järnvagsgatan 19, SE-543 50 Tibro
SWITCHBOARD +46 504 400 40
WEB prismatibro.se
E-MAIL contact@prismatibro.se